

“ Midway Elementary is a unique school in that it offers specialized arts in addition to the academics. My kids are not only learning traditional things found in elementary school but being exposed to many different art forms. The opportunity for my children to be a part of this magnet program has made them better thinkers and problem solvers. ”

Parent of 2 Midway Students



APPLY ONLINE

www.seminoleschoolchoicesapplication.us

- » Parents who reside in Seminole County are eligible to submit applications for their students applying to kindergarten through grade five.
- » Transportation is provided per school board policy.
- » Sibling Link is available per school board policy.
- » Receive a program link to Millennium Middle School's Fine Arts and Communication Magnet Program per school board policy.

WHERE EXCELLENCE TAKES CENTER STAGE



FOR APPLICATION INFORMATION

400 E. Lake Mary Blvd.
Sanford, FL 32773
407-320-0329
www.seminoleschoolchoices.us



FOR PROGRAM INFORMATION

3811 Brisson Ave.
Sanford, FL 32771
407-320-5950
www.midway.scps.k12.fl.us

MIDWAY ELEMENTARY SCHOOL

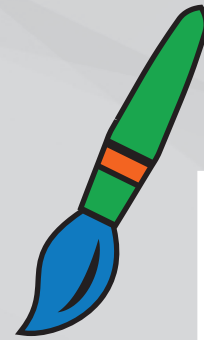


MIDWAY ELEMENTARY SCHOOL OF THE ARTS



Students at Midway Elementary School of the Arts are achieving excellence both in the classrooms and on stage. Unlike traditional public elementary schools, Midway Elementary offers:

- Ballet studio
- Band suite
- Orchestra suite
- Vocal Music suite
- Art studio for 2-D and 3-D exploration
- Full performance stage
- Black Box theater
- Outdoor amphitheater
- Career and Creativity Lab
- TV production studio



Blending High Academic Arts & Learning



SPOTLIGHT TALENT

Our magnet program gives students the opportunity to receive specialized arts instruction within our daily schedule.

KINDERGARTEN - THIRD GRADE

Students experience two areas in the arts every 12 weeks:

- Creative Movement (dance and physical education)
- Instrumental Music (keyboard, recorder, percussion, and strings)
- Chorus
- Musical Theater
- Art

FOURTH AND FIFTH GRADE

Students specialize in two arts areas for the school year:

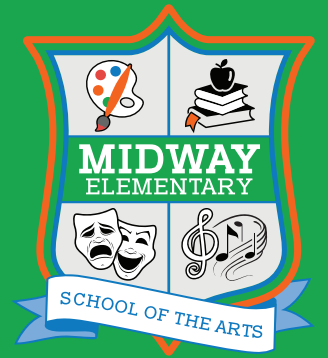
- Dance (classical, step contemporary and spirit)
- Vocal Music
- Band
- Orchestra
- Musical Theater
- Art (2-D and 3-D)
- Physical Education

ENRICHMENT PROGRAMS

After school performance groups and enrichment classes are available through an audition process:

- Piano
- Drumline
- Show choir
- Cast of our Dinner Theater Show

Our highlight of the year is a culmination of all grade levels and arts in an **annual full length production based on a popular Broadway musical**. Artistic projects created by students are also displayed throughout the school to complement the production.



PROGRAM LINK

Students who complete fifth grade at Midway Elementary School of the Arts have the opportunity to continue to pursue their interest in arts and communication at:

Millennium Middle School Fine Arts and Communication Magnet

To apply, submit an online application at:
seminoleschoolchoicesapplication.us

Students who submit an application on time, are given priority placement.



ARTFUL LEARNING

Midway Elementary School of the Arts is the only Artful Learning School in the state of Florida and 1 of 17 in the country. The Artful Learning model is an arts-based, K-5 comprehensive school plan inspired by legendary American composer Leonard Bernstein. His vision was that music and other fine/performing arts could be used to improve academic achievement and instill a love of learning by challenging students to:

EXPERIENCE

Students experience a classical or iconic Masterwork through sight, sound, movement, ideas and emotions.

CREATE

Students embrace learning as they actively create a product to show their understanding.

INQUIRE

Students are encouraged to inquire and build their own knowledge of the concept based on significant questions.

REFLECT

Students reflect thoughtfully on their process and to make connections and apply knowledge to other areas.